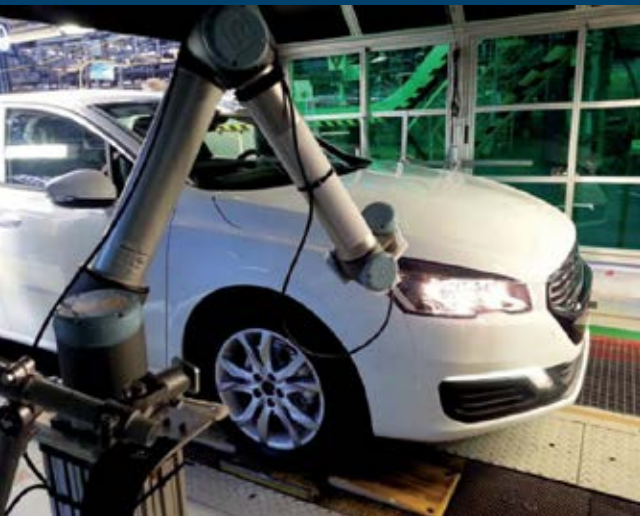


We DEVELOP



GAPFLEX

Collaborative robot station of gap and flush measurement for multi-materials

Main advantages

- 100 % production inspection
- Flexible and easy to add new measurements
- Suitable for use with collaborative robots (cobots: Kuka, Fanuc, Universal Robot etc.)
- Measuring any kind of material (sheet metal, chrome, polymers, glazing, polycarbonate etc.)
- Processing of different colours and surfaces (matt, gloss, metallic)
- In-line measurement using automatic tracking
- Re-time and optimise trajectory according to product position on assembly line
- Simultaneous gap and flush measurement

Benefits

- Rapid detection of process drift
- Traceability
- Savings in new product development process costs (system set up in pre-production)
- Control of all your assemblies

Applications

Industry: assembly of unpainted and painted metal sheets

GAPFLEX

Collaborative robot station of gap and flush measurement for multi-materials

Features

- Sensors: interchangeable, designed for industrial environments
- Attached to head of articulated robots
- An air-conditioned electrical enclosure containing: an industrial PC, image processing and video acquisition boards, boards for communication with the production line PLC and plant network
- SPC: SQL database designed to analyse a maximum number of criteria in minimum time.
- Variety of export formats for client environment

Technical specifications

Up to 70,000 measuring points per robot (cobot)

Resolution: 0.01 mm

Repeatability: 0.007 mm

Gap: 0.5 à 20 mm

Flush: -15 à 15 mm

Measuring time/point: < 20 ms

