

We TRAIN

MAGNETIC PARTICLE TESTING

LEVEL 1 & 2 (40 HOURS)

NDT Training Center | Testia Singapore

About the course:

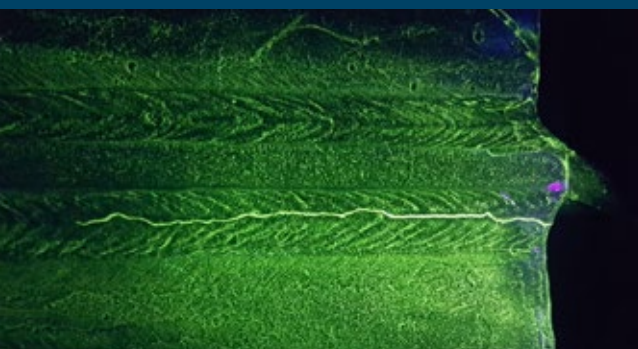
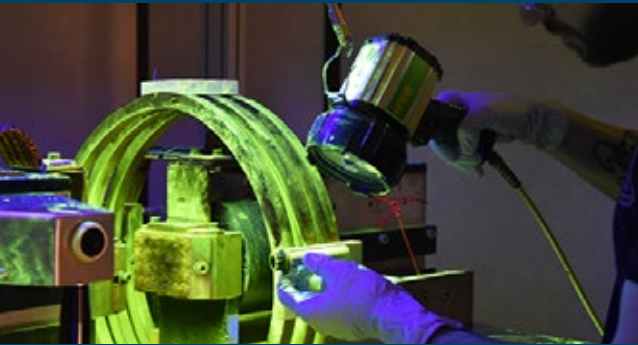
Magnetic Particle Testing (MT) (also known as magnetic particle inspection – MPI) is a non-destructive test (NDT) method, used to detect surface or subsurface (near to surface) discontinuities. This NDT method can be used on metals which can be easily magnetized (ferromagnetic).

This 40 hours course satisfy the formal training requirements of EN4179 and consist of both theoretical and hands-on practical.

Students will be continuously assessed during the course by progress tests, together with end-of-course examination (theory and practical).

Course contents:

- Introduction to NDT and certification of personnel (EN 4179 / NAS 410)
- Introduction
- History and principles of operations
- Advantages and disadvantages of the method
- Main types of discontinuity detected
- Facility requirements and/or equipment needed
- Safety considerations and/or precautions
- Interpret and evaluate results according to applicable standard, codes, specifications or procedures (e.g. ASTM E1444)
- Prepare magnetic particle testing written instructions and reports
- Application of method to a company's specific requirements



MT

