

A black and white photograph of a person from behind, wearing a dark t-shirt with 'TESTIA AN AIRBUS COMPANY' on the back. They are sitting at a desk with a large computer monitor. The monitor displays a software interface with a central image of a mechanical part and various data plots. A blue diamond-shaped graphic is overlaid on the center of the image, containing white text and the TESTIA logo.

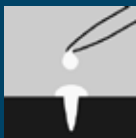
ISO 9712 Services

---

# NDT for Industry

---





## Penetrant Testing (PT)



Fast and cost-efficient inspection of surface defects or porosity.

### Suited for:

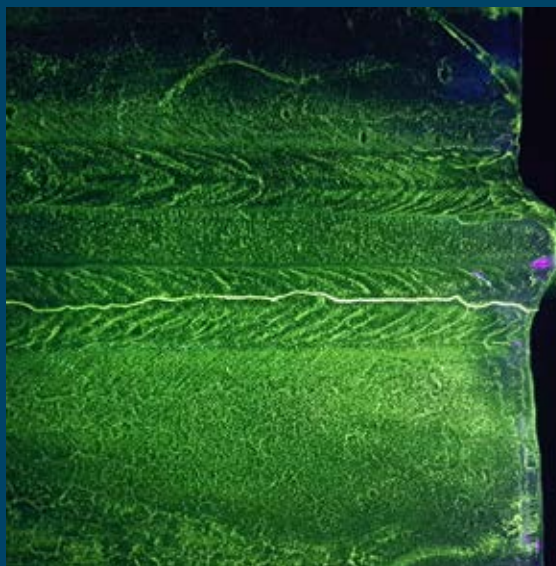
non-porous materials like plastic or metal

### Typical use cases for this method:

Pipes and containers  
Welds (e.g. on ships and pipes)  
Valves  
Turbine parts



## Magnetic Particle Testing (MT)



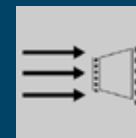
Inspection of surface and sub-surface discontinuities. Also suited for complex part geometries and unmachined surfaces.

### Suited for:

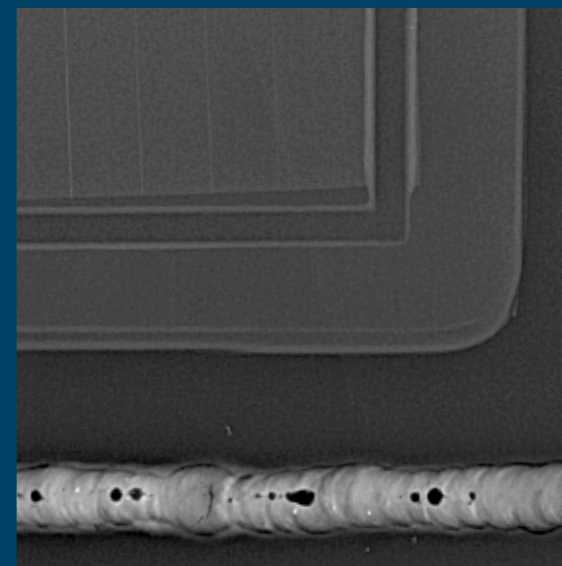
ferromagnetic metals, cast parts

### Typical use cases for this method:

Pipes and containers  
Welds (e.g. on ships and pipes)  
Valves  
Industrial plants



## Radiography Testing (RT & RT-D)



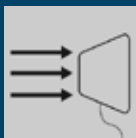
Detection of defects within parts, for example on welds and composites.

### Suited for:

metals, cast parts, additive manufactured parts, composites, ceramics

### Typical use cases for this method:

Welds (e.g. on ships and pipes)  
Electronic components  
Industrial plants



## Computed Tomography Testing (CT)



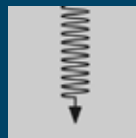
High-definition analysis of defects on and inside of parts with complex geometries.

### Suited for:

metals, cast parts, additive manufactured parts, composites, ceramics

### Typical use cases for this method:

Dimensional checks (CAD vs. real part)  
Complex printed parts  
Electronic components  
Pore content analysis



## Ultrasonic Testing (UT)



High-precision detection of defects deep within parts, even at small scale.

### Suited for:

metals and alloys

### Typical use cases for this method:

Welds (e.g. on ships and pipes)  
Thickness measuring  
Pressure vessels and pipes  
Metallic tubes and rails



## Eddy Current Testing (ET)



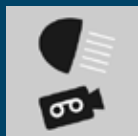
Surface inspection of delamination, thickness and conductivity.

### Suited for:

conductive materials

### Typical use cases for this method:

Incoming goods inspection (material recognition)  
Metallic tubes and rails



## Infrared Thermo- graphy Testing (TT)



Sub-surface delamination and cracks detection; detection of material discontinuities (thickness differences), localisation of repairs, repaints or hidden parts; localisation of water inclusions.

### Suited for:

almost all materials (with certain restrictions)

### Typical use cases for this method:

Thermal stress  
Building services engineering  
Water ingress



## Visual Testing (VT)



Surface inspection for quick damage detection; with or without the assistance of optical devices.

### Suited for:

all surfaces

### Typical use cases for this method:

Countless applications, often in combination with other ISO 9712 methods

## Products and Software for non-destructive Testing



Testia's products are dedicated to reduce inspection time and make defect detection easier.

This product portfolio makes 30 years of experience in aerospace also available to other industry sectors.

More info can be found on our website:

[www.testia.com/we-develop](http://www.testia.com/we-develop)