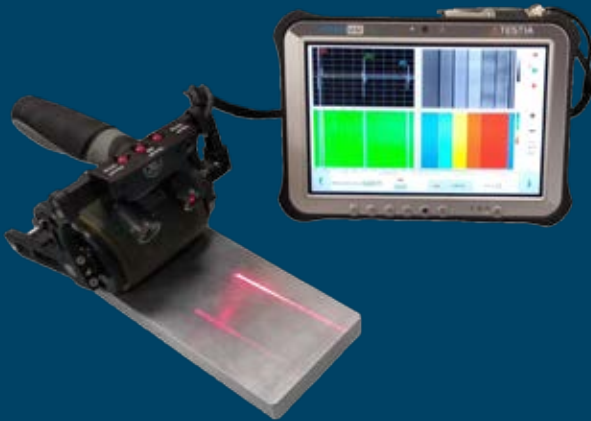


# We DEVELOP

## THICKNESS TOOL

130 times faster and accurate thickness mapping of blended-outs overall aircraft skin

Complete and dedicated kit that permits rapid and reliable assessment of wings and fuselage using Phased Array UT inspection method combined with tailored acquisition and automatic analysis software



### Benefits

#### Efficiency

- Perform inspection on large areas 130x faster
- Add to your workflow real digital continuity between acquisition, analysis & automatic reporting
- First time right performance thanks to step by step acquisition software and guided diagnosis
- Get an accurate C-Scan thanks to assisted acquisition software
- RemoteAssistance ready: Never go wrong!

#### Traceability

- Avoid dual entries and human errors thanks to automated reporting capabilities.

#### Ergonomic

- Travel-light & work safe with this light-weight and battery operated industrial kit
- No more hazard working at height & avoid FOD thanks to compact architecture and only 1 cable
- User oriented graphic interface fully tailored to the instrument's large screen display for effort-less data reading

#### Flexibility

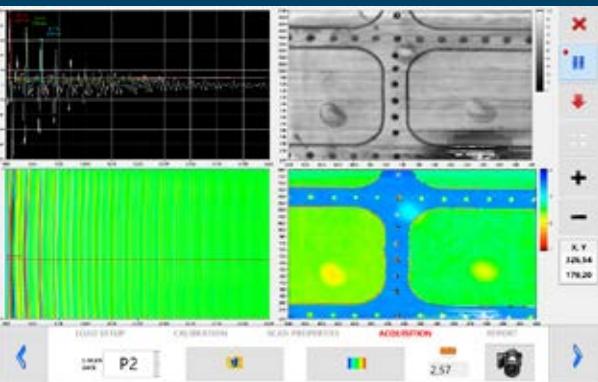
- No difference between wings and fuselage, get reliable readings from 0.6 to 20mm
- Expand your horizon to various industries thanks to customization potentials
- Enhance your network through real-time data and report sharing on this Windows environment
- Stay connected with your team with the 4G/Wi-Fi connectivity capabilities

#### Accuracy

- Rely on automatic assessment from 0.6 up to 20 mm in aluminium fuselage and wings
- Meets the level of results requested in the Aerospace sector thanks to complete reproducibility and repeatability

#### Reliability

- Always meet quality requirements for documentation with customizable Excel and Word reports
- Proven capabilities by being referenced by Airbus in NTM 51-10-04 "Procedure B"



# We DEVELOP

## Extras

Referenced in NTM procedure  
NTM 51-10-04B

# THICKNESS TOOL

130 times faster and accurate thickness mapping of blended-outs overall aircraft skin

## Features

- Digital continuity brick between acquisition, analysis and reporting
- Assisted (step by step) acquisition software
- Automatic reporting
- Remote assistance ready
- Adapted for wings and fuselage
- Customizable for other industries requirements
- Windows environment ready for connecting with your software
- Connectivity: Wi-Fi, 4G, etc.
- Automated reporting avoiding dual entries and human errors
- Customizable Excel and Word reports
- Airbus qualified NTM 51-10-04 "Procedure B"
- Automatic assessment from 0.6 up to 20 mm in aluminium parts
- Meets Aerospace specific requirements
- Light-weight industrial tablet with large screen
- Customer orientated user interface for simplified data reading

## Technical specifications

Complete kit includes:

Dimensions: 83mm × 47mm × 28mm

Weight: 1.7kg

Heavy duty transport case

32 elements Roller Probe and maintenance kit

Laser guiding system

Reference block AL2024 and AL7150

Miscellaneous (water, ruler, templates, etc.)

See SmartU32 tech specs for more information



## Materials:

all