

We DEVELOP



SMARTUE1

Inspection's Swiss Army knife: multi-methods aerospace-dedicated tool
boosting efficiency in all your daily operations

Multi-method single channel (UT, ET & resonance) and multi applications instrument
for efficient, flexible and reliable inspections.

Benefits

Efficiency

- Avoid delays thanks to remote assistance.
- Share reports with the 4G/Wi-Fi connectivity capabilities.
- Speed-up inspections thanks to assisted data analysis.
- Expand capabilities with a digital continuity brick between acquisition and reporting.

Flexibility

- Reach different areas thanks to multi-function built-in capabilities.
- Get a multi-method device for your multi-method certified personnel.
- Allow every certified or non-certified member of your team to use the tool.
- Integrate a windows tablet generating word/excel reports and connecting with your corporate applications (outlook, ERP, MIS...)

Traceability

- Share accurate reports thanks to assisted reporting capabilities.

Accuracy

- Get the level of results requested in the aerospace sector thanks to repeatability.

Reliability

- Inspect confidently with a +50 NTM procedures certified device.

We DEVELOP

Extras

The SmartUE1 is referenced in more than 50 NTM procedures to maintain AIRBUS aircrafts.

SMARTUE1

Inspection's Swiss Army knife: multi-methods aerospace-dedicated tool boosting efficiency in all your daily operations

Features

- Remote assistance
- Connectivity: Wi-Fi, 4G, etc.
- Assisted analysis
- Digital continuity brick between acquisition and reporting
- Windows environment ready for connecting with your software
- All-in-one device: UT, ET, rototest, resonance, galvanometer, thickness gauge, coating thickness, conductivity, clad...
- Modular: choose the software you need
- Some apps can be used by non-certified personnel
- Assisted reporting avoiding dual entries and human errors
- Aerospace specific
- Referenced in +50 procedures
- Light-weight industrial tablet with large touch-screen display

Technical specifications

Dimensions: 280mm x 198mm x 80mm

Weight: 2 kg

Connectors:

- Power supply, calibration and data transfer: USB
- Ultrasonic transducers: 2 Lemo 00
- Eddy current probes: Fischer 16 cts
- Position encoders inputs (x4): Fischer 12 cts

Analog signal output: no

Standards: EN12668-1:2010 et EN15548-1:2008 + CE marking

Indoor and outdoor use

Temperature intervals: -10°C à 45°C

Relative humidity in operation 30% to 80% (without condensation)

Protection index: IP65

Power: 100-240VAC 50/60Hz 1.6-0.9A

Degree of pollution: 2



Materials:

All

We DEVELOP

Extras

The SmartUE 1 is referenced in more than 50 NTM procedures to maintain AIRBUS aircrafts.

SMARTUE1

Inspection's Swiss Army knife: multi-methods aerospace-dedicated tool boosting efficiency in all your daily operations

A318/A319/A320/A321

51-10-07-270-801
53-21-55-250-801-A01
54-51-80-270-801-A01
54-52-05-250-801-A01
57-11-64-250-801-A01
57-11-73-270-803-A01
57-11-75-270-805-A01
57-12-03-270-801-A01
57-12-03-270-801-B01
57-12-03-270-802-A01
57-12-03-270-802-B01
57-12-04-270-801-A01
57-12-04-270-801-B01
57-12-04-270-802-A01
57-12-04-270-802-B01

A330

53-11-08-270-802-A01
53-11-96-270-801-A01
53-30-23-270-801-B01
53-30-28-270-801-B01
53-30-30-270-801-A01
53-30-50-270-801-A01
53-30-54-270-801-A01
53-30-55-270-801-A01
53-30-70-270-801-B01
53-30-71-270-801-A01
57-11-79-270-801-A01
57-20-96-270-801-A01
57-20-86-270-802-A01
57-61-21-270-801-A01

A340

53-30-23-270-801-B01
53-30-28-270-801-B01
53-30-30-270-801-A01
53-30-50-270-801-A01
53-30-54-270-801-A01
53-30-55-270-801-A01
53-30-70-270-801-B01
53-38-06-270-801-A01
53-38-39-250-801-B01
53-38-45-270-801-A01
53-38-46-270-801-A01
53-38-46-270-801-B01
53-39-08-270-801-A01
53-39-26-270-801-A01
57-18-25-270-801-A01
57-61-21-270-801-A01

A380

53-11-02-270-802-B01
53-11-10-270-801-A01
53-11-18-270-801-A01
53-11-20-270-801-A01
53-31-42-270-801-A01
57-21-05-270-802-A01

We DEVELOP

SMARTUE1 SOFTWARE

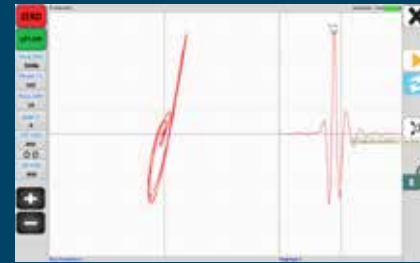
Clad Tool



Coating Thickness



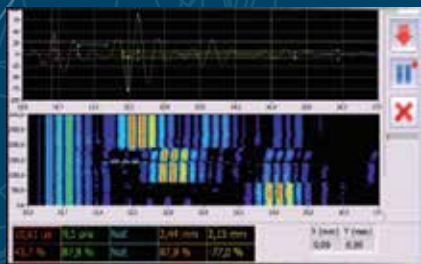
ET (inc. rototest)



Conductivity



UT



Resonance



Galvanometer



Thickness Gauge

