

We DEVELOP



SCRATCHVIEW

Cost-effective easy-to-use device for quick
and accurate scratches measurements above 0.03 mm

Scratch View is an optical high-definition laser profilometer, for quick evaluation and measurement of very small defects. Teammate of Line View for wide coverage from 0.03 mm up to 7 mm damages.

Benefits

Efficiency

- Reduced inspection time by instantaneous defect measurement.
- Very short training needed.
- Very low maintenance needed.

Reliability

- Precise repeatability of results.

Accuracy

- Optical & laser technology.
- No periodic check is needed.

Ergonomic

- Simple and effective four buttons operation.
- Portable light-weight & compact assembly.
- Avoid FOD with this one-piece wireless device.

SCRATCHVIEW

Cost-effective easy-to-use device for quick
and accurate scratches measurements above 0.03 mm

Features

- LCD Screen for direct reading of measurement
- Easy 4 buttons operation
- Portable
- Light-weight
- Wireless
- Class IIIa laser, compatible with market regulations
- No periodic check needed

Technical specifications

0.02 mm < Depth < 1 mm
- For 0.02 mm < Depth < 0.05 mm, accuracy = ± 0.005 mm
- For 0.05 mm < Depth < 1 mm, accuracy = $\pm 10\%$

0.03 mm < Width < 2 mm

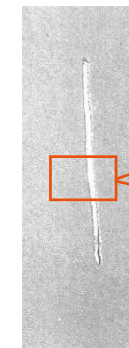
Weight: 1.7 kg

External USB port for data saving and reporting

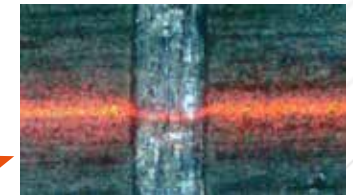
Autonomy: 6 h

Extras

Referenced on Airbus A320 NTM
53-00-01-220-802-A01



Accuracy : 5 μ m



Principle: laser triangulation



Materials:
Metallic



Depth:
0.02 mm - 1 mm



Width:
0.03 mm - 2 mm